

Model 415 | Electromechanical Swing Gate Operator

Model	Package Includes	Shipping Wt (approx)	Voltage	Part Number	Price
415 Basic Single Kit	Operator, 425D control panel, 14x16 enclosure, transformer and batteries (2)	58 lbs. (26.3kg)	24vdc (Transformer)	10441811.5*	\$1689

To make the above a master/slave (bi-parting) system use the following:

Model	Package Includes	Shipping Wt (approx)	Voltage	Part Number	Price
415 Operator Only	Use to make the single kit into a master/slave (bi-parting) kit; or use to order replacement operator. Order necessary length needed for system of five wire cable at no charge; maximum 40 ft per system; part number is 2194	25 lbs. (11.3 kg)	24vdc (Transformer)	10441811	\$789

To complete your gate system installation, or for replacement purposes, the following peripherals can be ordered:

Model	Package Includes	Shipping Wt (approx.)	Voltage	Part Number	Price
Battery (7.2 amp hour)	Two batteries are needed (replacement only)	6 lbs. (2.7 kg)	12vdc	3540	\$58
Transmitter	FAAC single button	1 lbs. (.45 kg)		1tm418ds	\$38
Transmitter	FAAC two button	1 lbs. (.45 kg)		787317	\$45
Photobeam	Directional with diagonal alignment; required for UL-325 compliance	1 lbs. (.45 kg)		785163	\$210
Receiver	FAAC single channel	1 lbs. (.45 kg)		1rp418ds	\$68
Five Wire cable	For use with master or master/slave system; (included with basic kit, see above)	N/A		2194	3.15/ft
Transformer	24vdc; 100va (replacement only)	5 lbs. (2.3 kg)	24vdc	2114	\$108
425D Control Panel	24vdc (replacement only)	2 lbs. (.9 kg)	24vdc	790930	\$587

* If you have any questions regarding your application, please call FAAC's technical department at 1-800-221-8278.

Visit us online at

www.faacusa.com

Model 770

In-ground Swing Gate Operator



- Designed for residential use
- Two year limited warranty (see back cover)

FAAC operators for swinging gates are among the safest available. The anti-entrapment and safety provided by all gate operators can and should be improved with photocells, loop detectors, sensing edges and/or other similar devices. FAAC strongly recommends that devices such as these be installed with all automated gate systems.

To guarantee the safety and efficiency of its equipment, FAAC strongly recommends that qualified personnel test the safety system on an annual basis, as well as maintain the overall hydraulic or mechanical system.

Model 770

Model 770 | Electromechanical Swing Gate Operator

The Model 770 was designed for in-ground installation so as not to detract from the appearance of the gate.

Features

- . Invisible installation
- . Minimized “pinch points”
- . Reverse on contact
- . Operates even in case of power failure (subject to battery condition)
- . Slow down “soft stop”
- . Optional 140° or 180° opening kits available



Model 770 in-ground application

UL 325
COMPLIANT
CSI # 02820 -
Gate Operators

Specifications	
Duty cycle	100%
Maximum gate swing	110 degrees (140 or 180 degrees with optional kit)
90 degree opening time	13 seconds
Maximum weight per gate leaf	800 pounds (363 kg)
Maximum length per gate leaf	10 feet (3 m)
Approx. operating temperature range	-4°F to 131°F (-20°C to 55°C)
Voltage	Primary: 115vac Secondary: 24vdc (100va transformer)
Power consumption	70 W
Current consumption	3 A
Protection class	Nema 4x

NOTE: Operator specifications are approximate. Environmental factors can change the performance of the operator.

* If you have any questions regarding your application, please call FAAC's technical department at 1-800-221-8278.

Model 770 | Electromechanical Swing Gate Operator



Model	Package Includes	Shipping Wt (approx.)	Voltage	Part Number	Price
770 Basic Single Kit	Operator, support box, 425D control panel, 14x16 in. enclosure, transformer and batteries (2).	98 lb. (44.5 kg)	24vdc (Transformer)	106753.5*	\$2299

To make the above a master/slave (bi-parting) system use the following:

Model	Package Includes	Shipping Wt (approx.)	Voltage	Part Number	Price
770 Operator Only	Use to make the single kit into a master/slave (bi-parting) kit; or use to order replacement operator. Order necessary length needed for system of five wire cable at no charge; maximum 40 ft per system; part number is 2194	24 lb. (10.9 kg)	24vdc (Transformer)	106753	\$899
Support Box	Needed with operator for bi-parting system	36 lb. (16.3 kg)		490065	\$414

To complete your gate system installation, or for replacement purposes, the following peripherals can be ordered:

Model	Package Includes	Shipping Wt	Voltage (approx.)	Part Number	Price
Battery (7.2 amp hour)	Two batteries are needed (replacement only)	6 lbs. (2.7 kg)	12vdc	3540	\$58
Transmitter	FAAC single button	1 lb. (.45 kg)		11m418ds	\$38
Transmitter	FAAC two button	1 lb. (.45 kg)		787317	\$45
Photobeam	Directional with diagonal alignment; required for UL-325 compliance	1 lb. (.45 kg)		785163	\$210
Receiver	FAAC single channel	1 lb. (.45 kg)		1RP418ds	\$68
Five Wire Cable		1 lb. (.45 kg)		2194	3.15/ft
140 Degree Opening Kit	Use to increase opening capacity to 140 degrees			390612	\$166
180 Degree Opening Kit	Use to increase opening capacity to 180 degrees			490111	\$467
Positive Stop Kit (Open)	Use for bolt on positive stop in the open position	2 lb. (.9 kg)		722121	\$46
Positive Stop Kit (Closed)	Use for bolt on positive stop in the closed position	2 lb. (.9 kg)		722122	\$115
Transformer	24vdc; 100va (replacement only)	5 lb. (2.3 kg)	24vdc	2114	\$108
425D Control Panel	24vdc (replacement only)	2 lb. (.9 kg)	24vdc	790930	\$587

Visit us online at

www.faacusa.com

Model 740

Slide Gate Operator



- Designed for residential use
- Two year limited warranty (see back cover)

FAAC operators for sliding gates are among the safest available. The anti-entrapment and safety provided by all gate operators can and should be improved with photocells, loop detectors, sensing edges and/or other similar devices. FAAC strongly recommends that devices such as these be installed with all automated gate systems.

To guarantee the safety and efficiency of its equipment, FAAC strongly recommends that qualified personnel test the safety system on an annual basis, as well as maintain the overall hydraulic or mechanical system.

Model 740

Model 740 | Slide Gate Operator

The Model 740 was designed as a rack & pinion operator for residential applications using a gate weighing a maximum of 880 pounds.

- . Gate automatically locks when not operating
- . Slow down “soft stop” on opening and closing
- . Operates even in case of power failure (subject to battery condition)
- . External limits
- . Convenient manual release



Model 740 (24 volt)

Specifications (Rack & Pinion configuration only)	
Voltage	Primary: 115vac Secondary: 24vdc (100va transformer)
Duty Cycle	100%
Maximum weight per gate leaf	880 lb (399 kg)
Maximum length per gate leaf	30 ft (9.1 m)
Absorbed power/absorbed current	70 W/3 A
Approx. operating temperature range	-4°F to 131°F (-20°C to 55°C)

NOTE: Operator specifications are approximate. Environmental factors can change the performance of the operator.

NOTE: Due to the size of the Model 740 transformer, it requires: (A) a separate enclosure with electrical outlet mounted at the gate site (see accessory below) or (B) the gate system is plugged into an electrical outlet INSIDE the residence.

Model	Kit Includes	Shipping Wt (approx.)	Voltage	Part Number	Price
Model 740 Single Basic Kit (no peripherals)	1 Operator, 1 Control Panel, Transformer, Foundation plate (12" x 7")	30lb. (13.6 kg)	24vdc (Transformer)	10978021	\$1,050
742D Control Panel (replacement only)				790939	\$587
Gear Rack (3.28 ft) (Nylon)				719325	\$50
Battery Back-up Kit	To add battery function to your system, kit includes: 2 batteries (1.2 amp hour) wiring cable, support bracket (fits inside cover)	2 lb (.9 kg)	12vdc	390901	\$132
Battery	1.2 amp hour (replacement only)	1 lb (.45 kg)	12vdc	7550075	\$53

Model 390

Low Voltage Swing Gate Operator



- Designed for residential use
- Two year limited warranty (see back cover)

FAAC operators for swinging gates are among the safest available. The anti-entrapment and safety provided by all gate operators can and should be improved with photocells, loop detectors, sensing edges and/or other similar devices. FAAC strongly recommends that devices such as these be installed with all automated gate systems.

To guarantee the safety and efficiency of its equipment, FAAC strongly recommends that qualified personnel test the safety system on an annual basis, as well as maintain the overall hydraulic or mechanical system.

Model 390

Model 390 | Electromechanical Swing Gate Operator

The Model 390 was designed primarily to accommodate large pillar installations.

- . Easy installation
- . No gate modifications are necessary
- . Operates even in case of power failure (with optional battery back-up and subject to battery condition)
- . Reverse on contact
- . Slow down "soft stop"



Model 390

Batteries are for emergency back-up only; not needed to run system under normal conditions.

UL 325
COMPLIANT
CSI # 02820 -
Gate Operators



The 390 is also ideal for swinging garage doors.

Specifications

Duty cycle	100%
Maximum gate swing	120 degrees
90 degree opening time	13 seconds
Maximum weight per gate leaf	600 pounds (181.4 kg)
Maximum length per gate leaf	14 feet (3 m)
Approx. operating temperature range	-4°F to 131°F (-20°C to 55°C)
Voltage	Primary: 115vac Secondary: 24vdc (100va transformer)
Absorbed power	3 W
Protection class	Nema 4x

NOTE: Operator specifications are approximate. Environmental factors can change the performance of the operator.

Model 390 | Electromechanical Swing Gate Operator



Model	Package Includes	Shipping Wt (approx.)	Voltage	Part Number	Price
Model 390 Basic Single Kit	Operator, 425D control panel, 14x16 enclosure, transformer batteries (2), and 2 limit switches	58 lbs. (26.3kg)	24vdc (Transformer)	104572.5*	\$1834

To make the above a master/slave (bi-parting) system use the following:

Model	Package Includes	Shipping Wt (approx.)	Voltage	Part Number	Price
390 Operator Only	Use to make the single kit into a master/slave (bi-parting) kit; or use to order replacement operator. Order necessary length needed for system of five wire cable at no charge; maximum 40 ft per system; part number is 2194 or add 2 limit switches	24 lbs. (10.9kg)	24vdc (Transformer)	104572	\$829

To complete your gate system installation, or for replacement purposes, the following peripherals can be ordered:

Model	Package Includes	Shipping Wt (approx.)	Voltage	Part Number	Price
Battery (7.2 amp hour)	Two batteries are needed (replacement only)	6 lbs. (2.7 kg)	2vdc	3540	\$58
Limit Switch	Shuts operator off; serves as positive stop; one limit needed for open stop, another for closed stop	1 lbs. (.45 kg)		390682	\$31
Transmitter	FAAC single button FAAC two button	1 lbs. (.45 kg)		1tm418ds 787317	\$38 \$45
Photobeam	Directional with diagonal alignment; required for UL-325 compliance	1 lbs. (.45 kg)		785163	\$210
Receiver	FAAC single channel	1 lbs. (.45 kg)		1rp418ds	\$68
Five Wire cable	N/A		2194		3.15/ft
Transformer	24vdc; 100va (replacement only)	5 lbs. (2.3 kg)	24vdc	2114	\$108
425D Control Panel	24vdc (replacement only)	2 lbs. (.9 kg)	24vdc	790930	\$587

* If you have any questions regarding your application, please call FAAC's technical department at 1-800-221-8278.

Model	Package Includes	Shipping Wt	Part Number	Price
390 Arm	Articulated replacement arm	4 lbs.	738705	\$236
390 Arm	390 Telescopic Arm	4 lbs.	738706	\$151

* If you have any questions regarding your application, please call FAAC's technical department at 1-800-221-8278.

Visit us online at

www.faacusa.com

Model 415

Electromechanical Swing Gate Operator



- Designed for residential use
- Two year limited warranty
(see back cover)

FAAC operators for swinging gates are among the safest available. The anti-entrapment and safety provided by all gate operators can and should be improved with photocells, loop detectors, sensing edges and/or other similar devices. FAAC strongly recommends that devices such as these be installed with all automated gate systems.

To guarantee the safety and efficiency of its equipment, FAAC strongly recommends that qualified personnel test the safety system on an annual basis, as well as maintain the overall hydraulic or mechanical system.

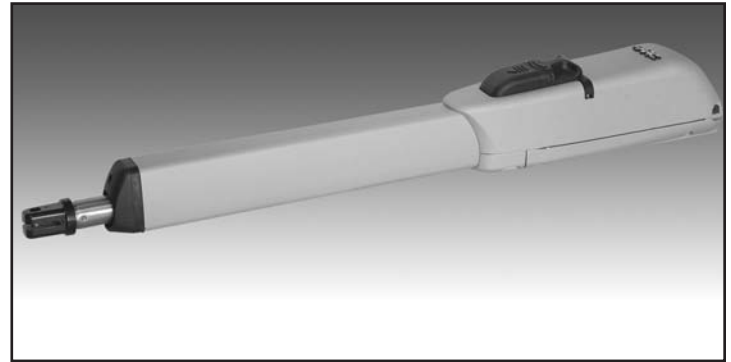
Model 415

Model 415 | Electromechanical Swing Gate Operator

The Model 415 was designed to provide power and versatility to an economical residential swing operator.

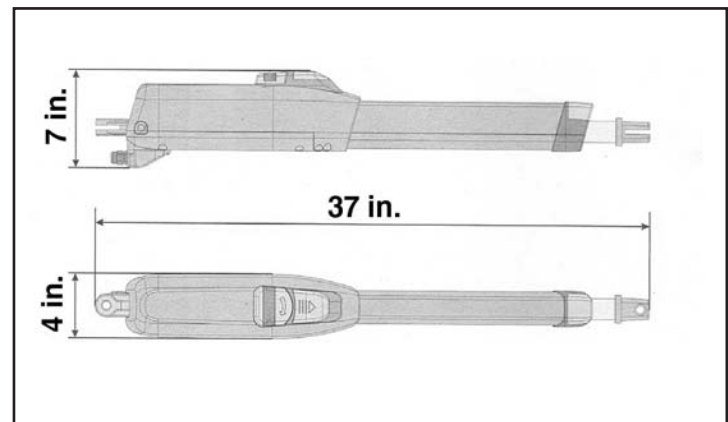
Features

- Sleek design
- Sealed limit switches



Model 415

Batteries are for emergency back-up only; not needed to run system under normal conditions.



Model 415 dimensions



UL 325
COMPLIANT
CSI # 02820 -
Gate Operators

Specifications	
Duty cycle	100%
Maximum gate swing	110 degrees
90 degree opening time	13 seconds
Maximum weight per gate leaf	700 pounds (317.5 kg)
Maximum length per gate leaf	15 feet (4.6 m)
Approx. operating temperature range	-4°F to 131°F (-20°C to 55°C)
Voltage	Primary: 115vac Secondary: 24vdc (100va transformer)
Power Consumption	70 W
Current Consumption	3 A
Effective Stroke	15 in. (38.1 cm)
Protection class	Nema 4x

NOTE: Operator specifications are approximate. Environmental factors can change the performance of the operator.